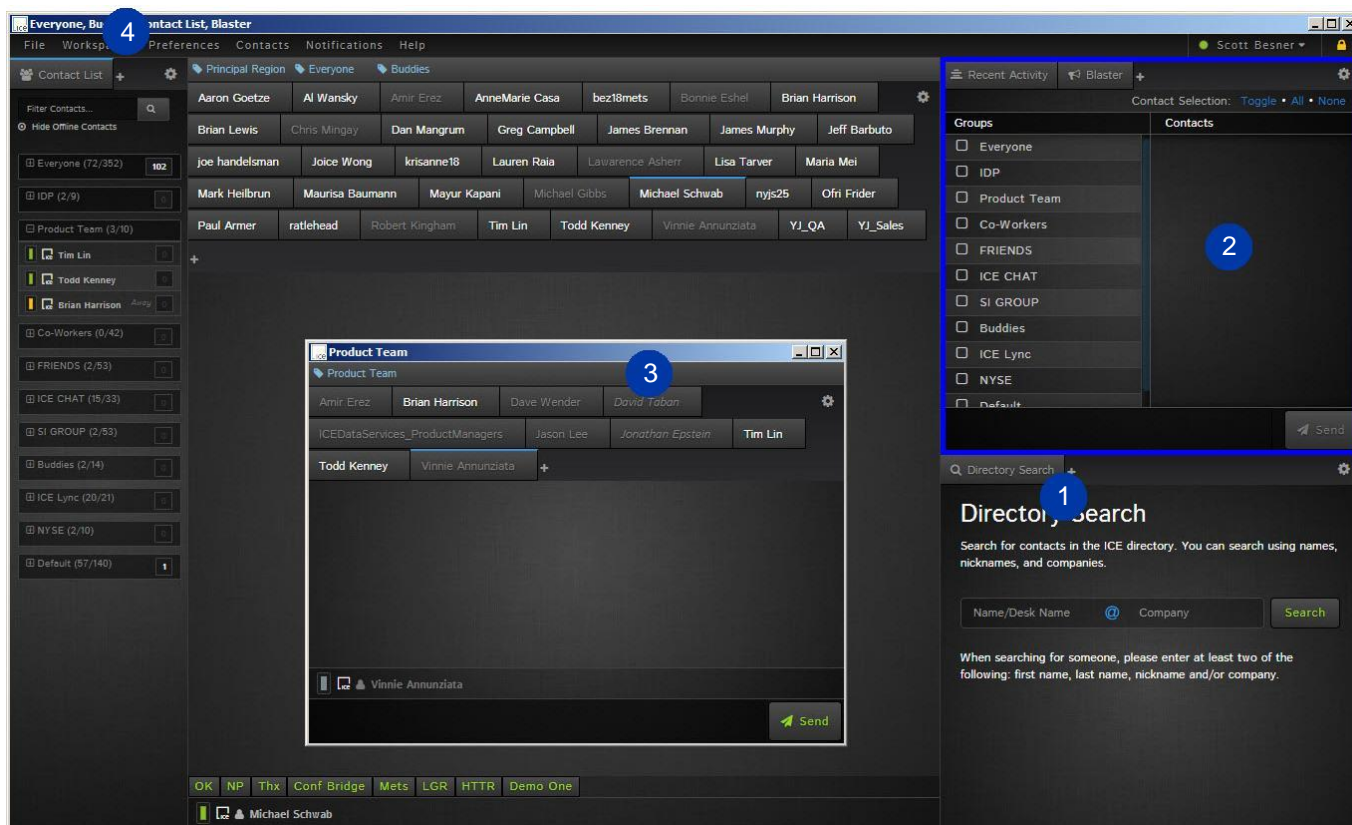


ICE CHAT APPLICATION

ICE's enhanced chat application offers the tools to keep you connected to the people and information that move markets. Featuring an easy-to-use, fully customizable interface, you can tailor your workspace solutions to increase workflow efficiency and react seamlessly to trading opportunities in real-time.

WIDGETS, REGIONS, WINDOWS & WORKSPACES



- 1 Widget: A widget is an application. The first widgets available are message tabs, recent activity, contact list, message blaster, groups manager and the directory search.
- 2 Region: A Region is a section within a console window which contains widgets.
- 3 Console Window: A console window can be split into one or more regions, allowing for layout customization.
- 4 Workspace: A workspace is an arrangement of console windows that can be distributed across one or more screens. Users can design and switch between multiple workspaces.

DRAG & DROP / REGION SPLITTING

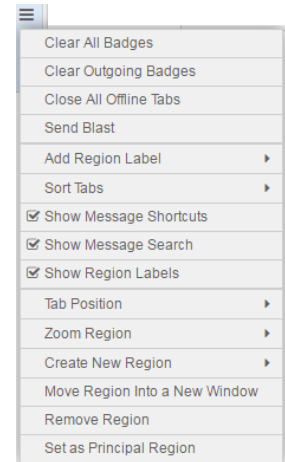
You can open new regions using advanced drag and drop functionality. Drag and drop a group or a contact from the contact list to create a new region and start communicating instantly. Drag a tab from one region to create a new one. As you drag new regions within your workspace, the application will automatically highlight the recommended drop positions and sizes.

There is also the ability to configure your workspace layout prior to opening widgets with the use of region **menu controls**.

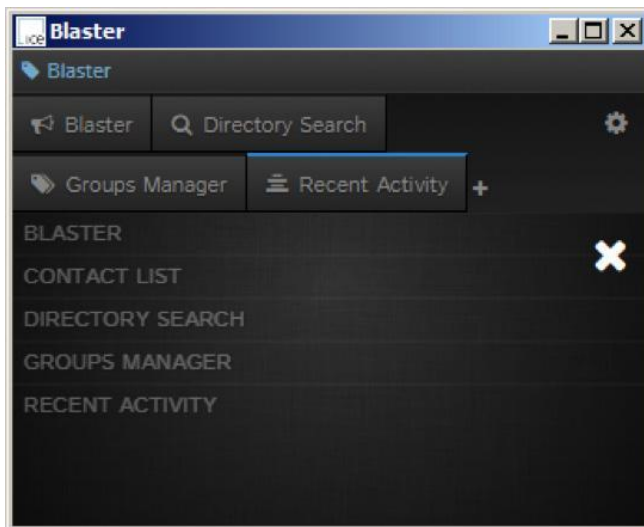
The **Create New Region** menu selection provides the ability to open a new region in the current console window. The new region could be opened On Top, On Bottom, To Left, or To Right.

Move Region Into a New Window tears the region out into its own console window.

Remove Region closes the region.



TIP: When your workspace is just the way you want it, lock it to prevent any unwanted changes.



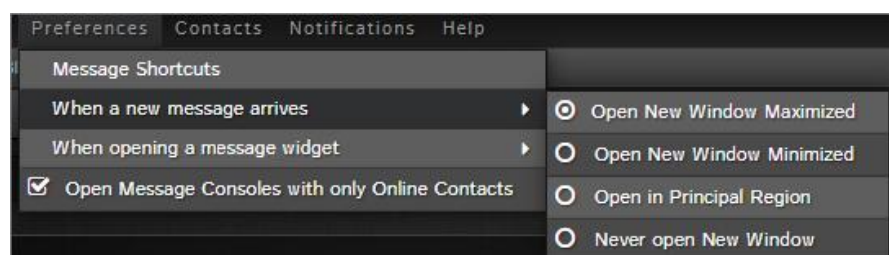
Easily access other message widgets by clicking on the “+” sign next to the last tab in any region;

- Message Blaster: Send a message to multiple contacts at once
- Contact List: All of your contacts in one easy to access list
- Directory Search: Search the ICE directory for contacts and/or desks across multiple markets
- Groups Manager: Organize and manage your contact groups
- Recent Activity: Comprehensive view of all inbound messages

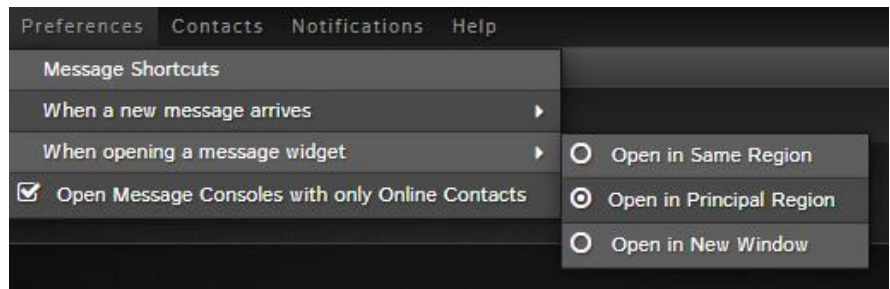
ICE CHAT PREFERENCES

User preferences have been added to control the opening of message widgets.

When a new message arrives; this option controls where and how to open a contact’s message tab when you receive a message and their tab is not already open.



When opening a message widget; this option controls where and how to open a contact's message tab when the user clicks to initiate a conversation.



Selecting "Open in Principal Region" will control the opening of message tabs as follows:

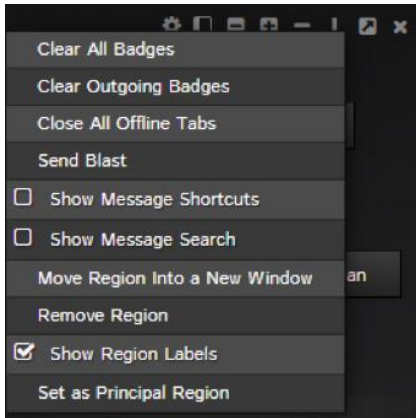
Manually opening message tabs will open in the principal region if there is no instance of the message tab open already

Incoming messages will open in principal region if there is no instance of the contact open already

You can change the principal region from the



Region Menu within any region by selecting "Set as Principal Region"



TABS SORTING

Tab Sorting Preferences

Tabs are opened based upon your sort selection. When sorting by name, you can further control order by widget type.

Alphabetical Reverse Alphabetical Manual

Group By Widget Type Before Sorting

Apply & Save

Cancel

Ability to sort tabs under Preferences → Tab Sorting. There are 3 options: Alphabetical, Reverse Alphabetical, or Manual (default).

CONTACT SORTING

Ability to sort contacts alphabetically or reverse alphabetically, optionally using presence, in widgets such as the contact list, the blaster, and the participant lists of chat rooms.

Go to Contacts → Contact Sorting Preferences

Contact Sorting Preferences

Applies to all contact listings (contact list, chat rooms, etc.). Does not apply to tabs.

Alphabetical Reverse Alphabetical

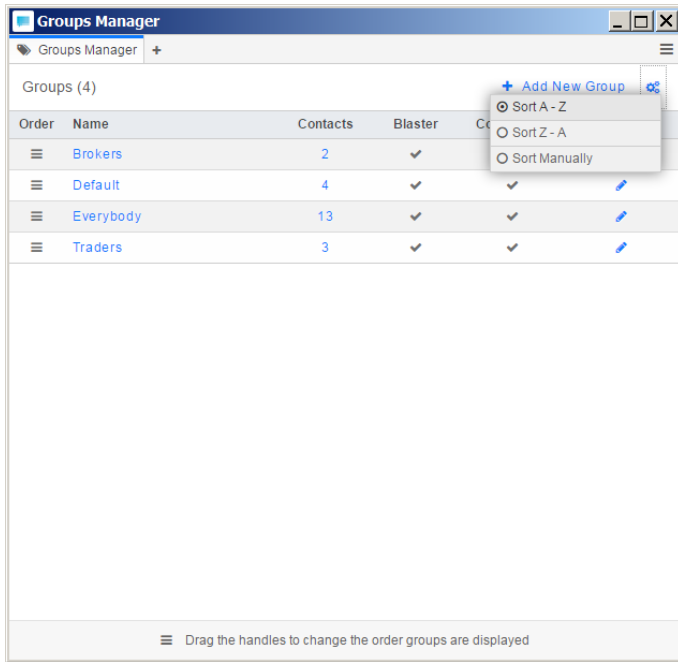
Group By Presence Before Sorting

Apply & Save

Cancel

GROUPS SORTING

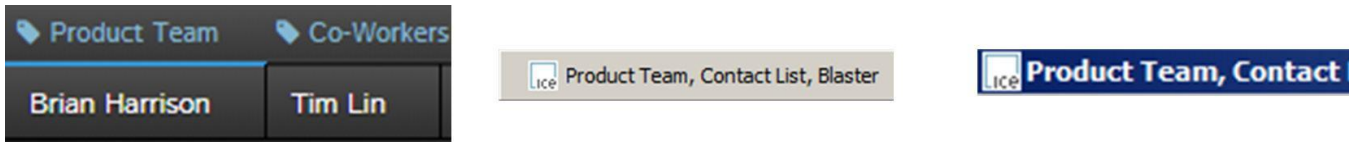
On the main page of the Groups Manager, to the right of the Add New Group link is a toggle to quickly sort your groups A-Z, Z-A, or manually.



REGION LABELS

Regions are tagged with labels indicating which group(s) are shown within the region. Regions can contain multiple groups. The opening of message widgets, both manually and upon receiving a message, will abide by the region tags.

When a region is tagged, the labels will be displayed above the tabs as well as in the task bar on the windows title bar.



By hovering on a tag and clicking the "x" the association between the group and region will be removed.

In the Region Menu, you can show/hide region labels by selecting/de-selecting "Show Region Labels". With this de-selected, the rules of the labels still apply.

CONTACT US

technologyservices@theice.com / +1 212 323 6008

theice.com/instant-messaging

© 2015 Intercontinental Exchange, Inc. The following are trademarks of Intercontinental Exchange, Inc. and/or its affiliated companies: Intercontinental Exchange, ICE, New York Stock Exchange and NYSE. For more information regarding trademarks owned by Intercontinental Exchange, Inc. and/or its affiliated companies see: intercontinentalexchange.com/terms-of-use