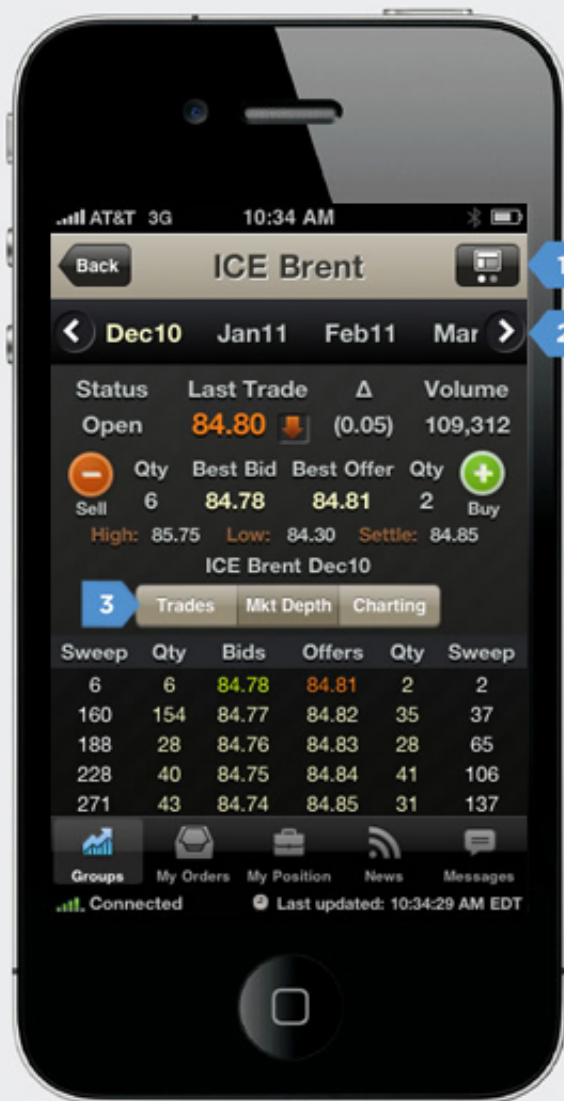


# Live Price Charting

ICE mobile for WebICE users offers unparalleled access to real-time market data on your iPhone, iPad and iPod touch.

This tip is designed to demonstrate one of the most helpful ICE mobile features.

Live Price Charting on ICE mobile includes support for moving averages, candlestick charts, bar charts, line charts and spread charts.



1. Tap icon to toggle between viewing commodities and trading periods
2. Swipe with your finger to choose desired commodity or trading period
3. Tap to view charting, full depth of market, or completed trades
4. Swipe with your finger to choose desired commodity or trading period
5. Magnified view of crosshair
6. Tap to overlay moving averages on your chart (green/blue lines)
7. Select the time period and interval for your chart
8. Tap to toggle between bar chart, candlestick chart and line chart
9. At crosshair intersection, instantly view the Open, High, Low, and Close of point
10. Tap anywhere on chart to create crosshair for specific point



[View ICE mobile demo](#)

## Tell us what you think.

New features for ICE mobile are already in development, however we expect many improvements will be inspired by your ideas.

[Give us your feedback](#)

## Contact us

E-mail: [icemobile@theice.com](mailto:icemobile@theice.com)  
 Call: +1 770 738 2101 (Option 1, 1)  
 Visit: [theice.com/mobile](http://theice.com/mobile)  
[Request a demo](#)



**MARKETS ARE  
MOVING™**

