



ICE Tips

WebICE Functionality: Floating Market Windows, Resizing Font Size per Row and Drag and Drop

September 10, 2007

The following are registered trademarks of IntercontinentalExchange, Inc. and/or its affiliated companies: ICE, TIPS, WEBICE, GLOBAL MARKETS IN CLEAR VIEW, ICE TRADE THE WORLD, U.S. DOLLAR INDEX and SUGAR NO. 11, ICE FUTURES CANADA, ICE FUTURES U.S. and ICE FUTURES EUROPE. For more information regarding registered trademarks owned by IntercontinentalExchange, Inc. and/or its affiliated companies see <https://www.theice.com/terms.jhtml>.

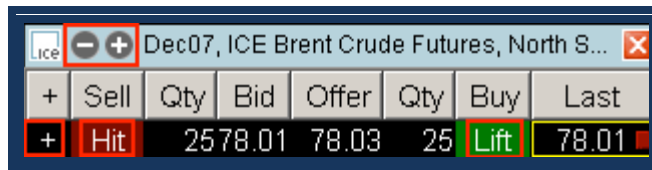
This material may not be reproduced or redistributed in whole or in part without the express prior written consent of IntercontinentalExchange, Inc. Copyright IntercontinentalExchange, Inc. 2011, All Rights Reserved.

Floating Market Windows on WebICE

The floating market window offers the WebICE user an option to pull the trading information (bid, offer, quantities, etc) into a smaller window to be placed anywhere on their trading screen. To engage a floating market window simply click on the product column for the product in question, while holding your left mouse button down move your cursor slightly in any direction. You will now see a floating window for the product you have selected.



Once this floating window has been engaged you can move it anywhere on your screen. The font size can be increased or reduced for this window by clicking on the + or - sign in the top left corner of the window. To view the market depth, simply click on the + sign on the left side of the window. A trader will see hit and lift next to the best bid and offer and can trade from this screen just as if it were the main trading screen.

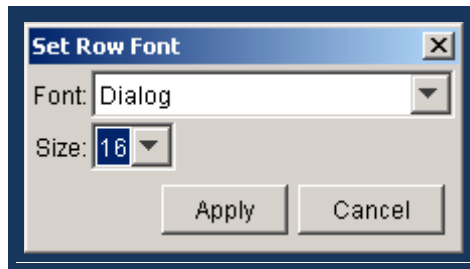


Resizing Font by Row

WebICE font sizes can be changed on a per product row basis. To increase the row font size for a specific row, right click on the product, hub or strip column in the specified row and left click on Set Row Font.



The Set Row Font window will pop up, select the Font and Size from the drop down selections then click Apply.



The row selected will now have a larger font size while the rest of the rows retain the initial font settings. This specific row will show this font size even if the rest of the portfolios font size is increased or decreased.

	Hub	Strip	+	-	Sell	Qty	Bid	Offer	Qty	Buy	Last
es	WTI	Oct07	+		Hit	20	72.92	72.94	1	Lift	72.94
	WTI	Nov07	+		Hit	1	72.98	73.00	17	Lift	72.98
	WTI	Dec07	+		Hit	15	73.04	73.07	15	Lift	73.04

To restore the original font to the default for the portfolio, right click on the product, hub, or strip and select Restore Default Row Font.



Drag and Drop Columns

WebICE now offers drag and drop of all columns to the right of buy and the left of the blue book. When you hover your cursor over the columns labeled 'Last' through 'Market State' the heading will display green indicating that this column can be moved. Left mouse click on the column heading and drag the column while holding the left mouse button. Move the column to the desired location and release the left mouse button.

Buy	Last	WAP	Volume	Change	Mkt. State	Kill	Qt
Lift	670.25	668.80	388	2.00	Open	X	
Lift	673.50	670.56	78	-0.75	Open	X	
Lift	672.75	673.12	119	-2.50	Open	X	
Lift	679.25	681.75	2	0.00	Open	X	
Lift	675.50	0.00	1		Open	X	
Lift	-3.25	-3.25	1	0.00	Open		
Lift					Open		
Lift	-11.50	-11.50	1	2.00	Open		
Lift	-5.25	-5.25	1	4.50	Open		

The columns can not be moved into the trading area or the blue book and must remain in this section to the right of buy and the left of the blue book. If the column is dragged into an area where it can not be dropped, the heading will turn red which indicates that the column can not be dropped into this area. The column will return to the original position if it cannot be dropped in the location selected.

Order	WAP	Qty	Buy	Last	Volume	Order
67C	668.80	22	Lift	670.25	388	
674	670.56	17	Lift	673.50	78	
67E	673.12	47	Lift	672.75	119	
67E	681.75	19	Lift	679.25	2	
67E	0.00	25	Lift	675.50	1	
-2	-3.25	17	Lift	-3.25	1	
-2		5	Lift			
-5	-11.50	10	Lift	-11.50	1	